



# City of Port Orchard 2012 Revenue Sources Hearing

October 25, 2011

# An Overview of the City's Current Expense and Street Budgets

## A Requirement of RCW 84.55.120

Current expense budget means that budget which is primarily funded by taxes and charges and reflects the provision of ongoing services.

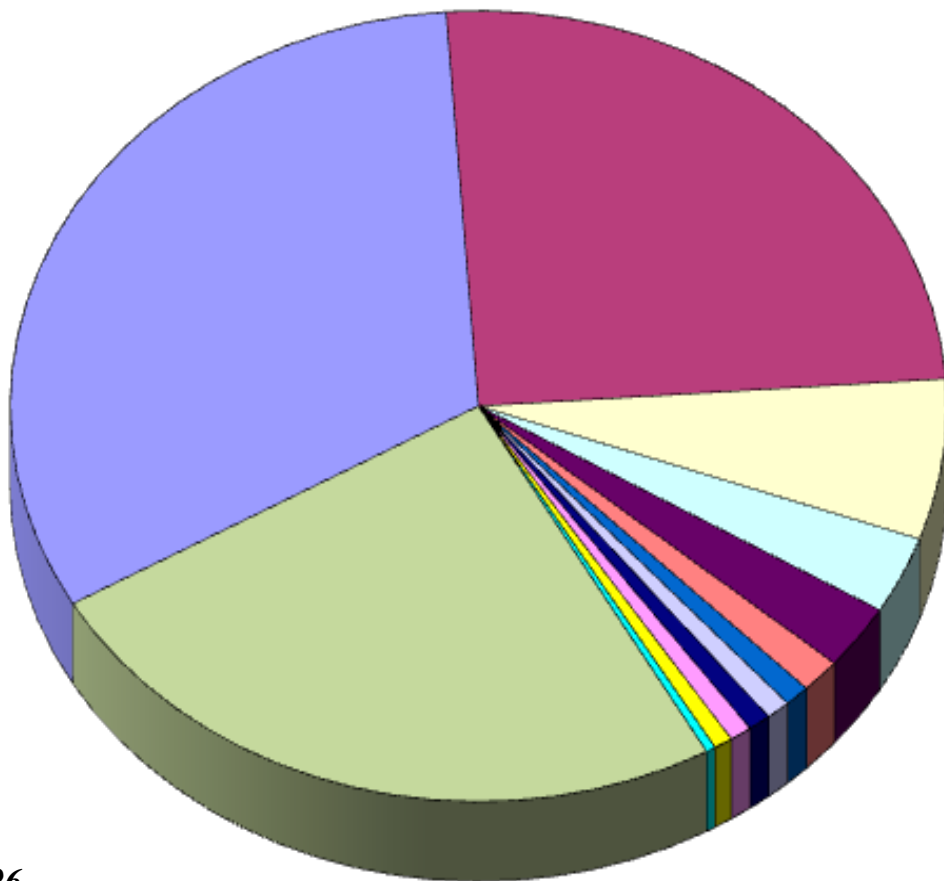
Current expense budget does not mean the capital, enterprise, or special assessment budgets.

# 2012 REVENUE

2,172,123

\$2,800,000

2,151,126  
*Non-tax revenue*



- ▣ Sales
- ▣ Property
- Other Taxes
  - ▣ Electric
  - ▣ Telephone
  - ▣ WA/SW/Storm
  - ▣ Criminal Justice
  - ▣ TV Cable
  - ▣ Garbage
  - ▣ Gas
  - ▣ Gambling
  - ▣ Admissions
  - ▣ Leasehold Excise

570,500

275,000

229,500

120,500

76,000

73,000

29,000

56,000

67,000

68,000

\$6,536,623

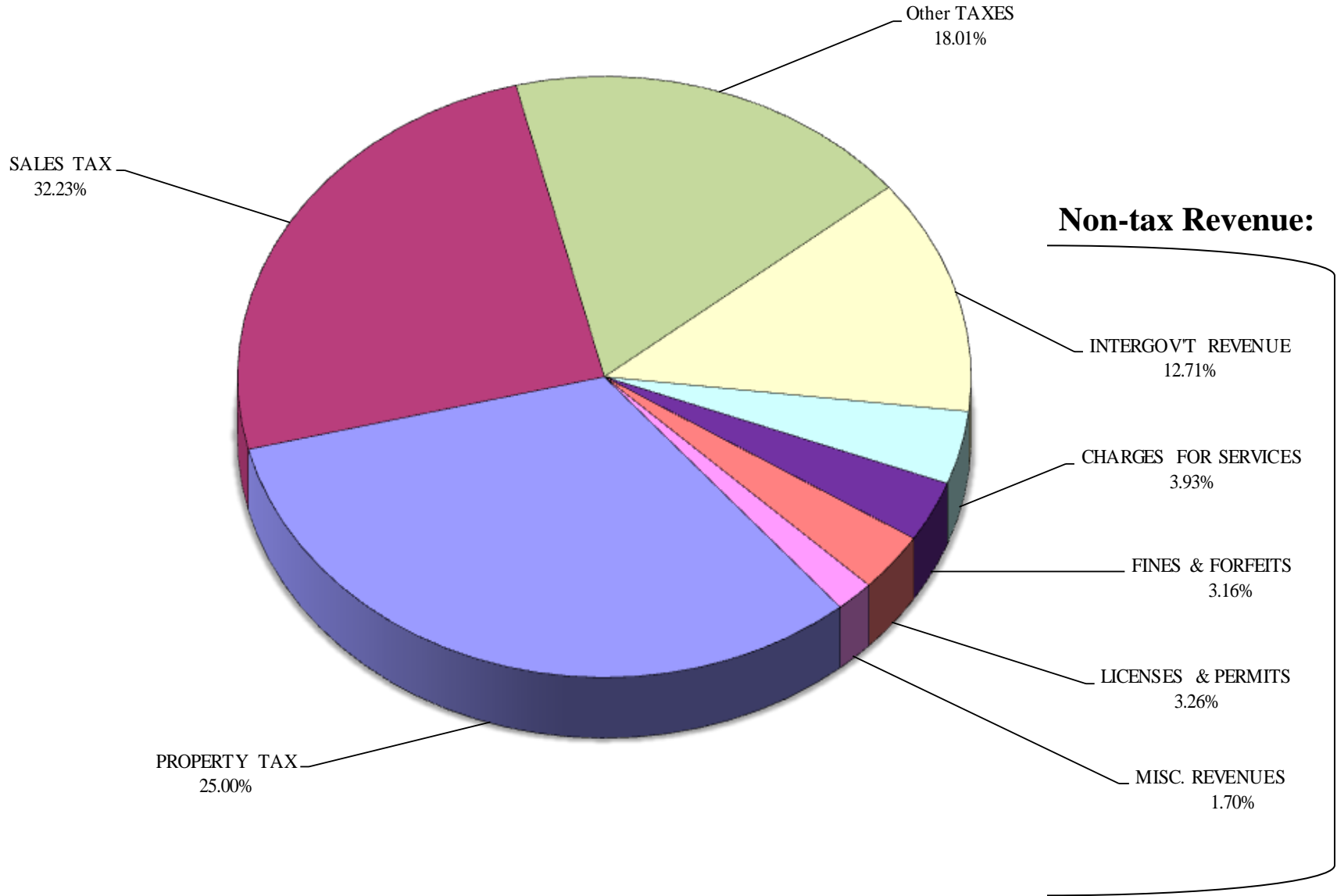
▣ Non-tax Revenue

TOTAL \$8,687,749

# 2012 Tax Revenue

		Percent of total tax
Retail Sales & Use Tax	2,800,000	42.77%
Property	2,172,123	33.34%
Electric	570,500	8.71%
Telephone	275,000	4.20%
Utilities Tax	229,500	3.51%
Criminal Justice	120,500	1.84%
TV Cable	76,000	1.16%
Garbage	73,000	1.11%
Gas	68,000	1.04%
Gambling	67,000	1.02%
Admissions	56,000	0.86%
Leasehold Excise	29,000	0.44%
<b>Total</b>	<b>\$6,536,623</b>	

# 2012 Revenue by Percentage Including Non-tax Revenue

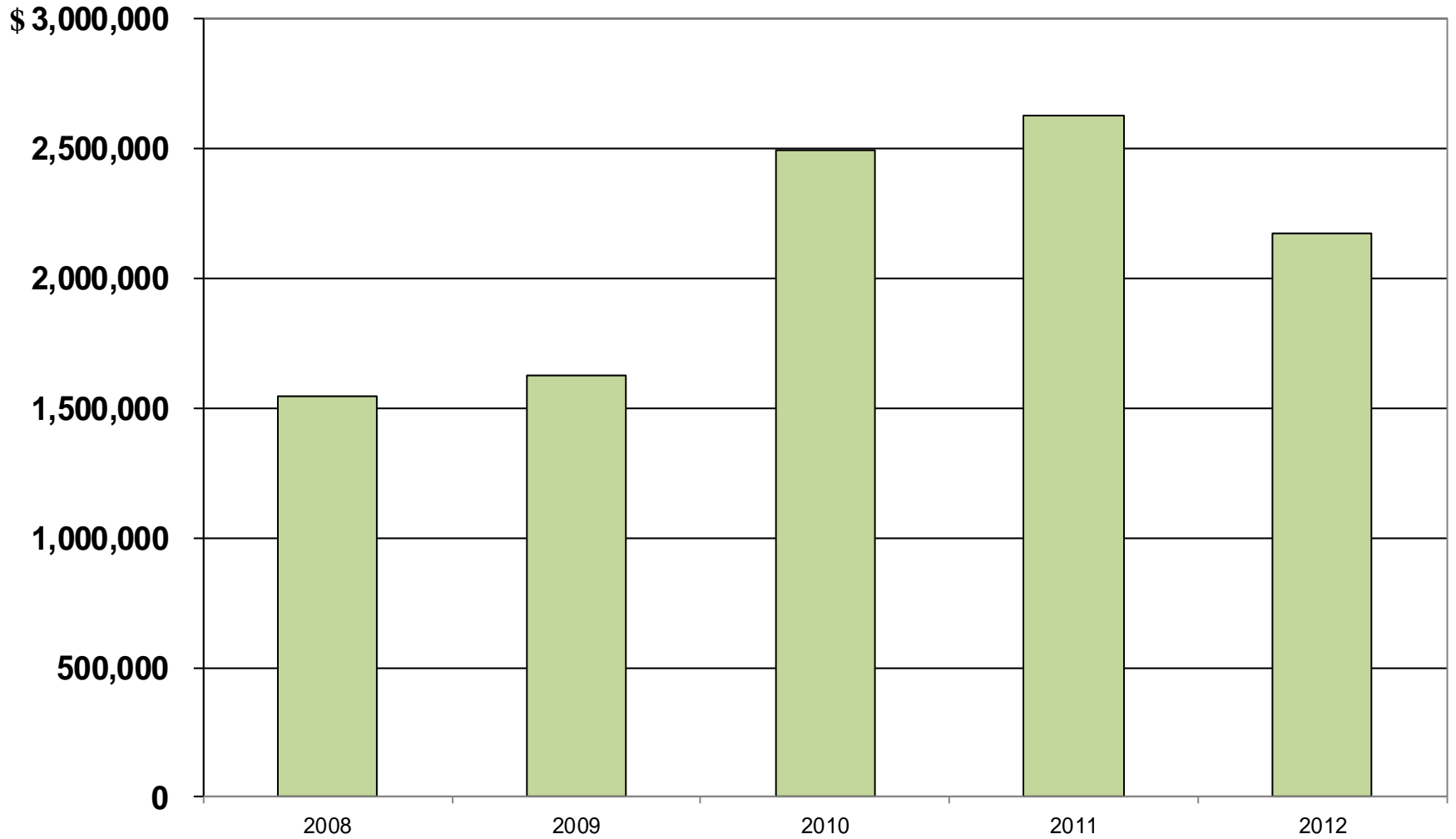


# Revenue Comparison

Revenue By Category	2011	2012	
Sales Tax	2,740,000	2,800,000	2.19%
Property Tax	2,626,207	2,172,123	-17.29%
Other Taxes	1,544,800	1,564,500	1.28%
<b>Tax Revenue</b>	<b>6,911,007</b>	<b>6,536,623</b>	<b>-5.42%</b>
Licenses & Permits	239,500	283,000	18.16%
Intergovernmental Revenue	591,819	*1,104,476	86.62%
Charges For Services	329,200	341,800	3.83%
Fines & Forfeits	235,500	274,200	16.43%
Miscellaneous Revenues	150,400	147,650	-1.83%
<b>Non-tax Revenue</b>	<b>1,546,419</b>	<b>2,151,126</b>	<b>39.10%</b>
<b>Subtotal</b>	<b>8,457,426</b>	<b>8,687,749</b>	<b>2.72%</b>
Other Financing Sources	0	320,900	
Assigned & Restricted Carryovers	1,600,256	1,503,403	
Beginning Fund Balance (Current Exp. & St)	399,000	800,000	
ILA - Kitsap County/KCCHA	-434,441	-76,996	
<b>Total</b>	<b>\$10,022,241</b>	<b>\$11,235,056</b>	

\* Includes \$679,000 from Department of Commerce for DeKalb Pier Project

# PROPERTY TAX COLLECTION HISTORY



**2008 - 2012**

# Property Tax History

<b>LEVY YEAR</b>	<b>ASSESSED VALUATION</b>	<b>LEVY RATE</b>	<b>LEVIED PROPERTY TAXES</b>
2008	814,625,858	1.8949	1,543,671
2009	833,125,854	1.9488	1,623,607
2010	1,165,037,143	2.1423	2,495,925
2011	1,251,963,333	2.1192	2,626,274
<b>Projected 2012</b>	<b>1,193,474,322</b>	<b>1.8200</b>	<b>\$2,172,123</b>

# Property Tax Comparison

## 2011 to 2012

Levy Rate – 2.1192	2011	Levy Rate – 1.8200	2012
2010 Levied Amount	\$2,506,565	2011 Levied Amount	*\$2,172,123
1% Increase	25,066		-0-
New Construction	64,668		-0-
Annexation	26,861		-0-
Total Property Tax	2,623,160		2,172,123
Refunds	3,114		-0-
Total	\$2,626,274		*\$2,172,123

\* Total Levy Amount due to Statutory Rate Limits

# Retail Sale & Use Tax Revenue

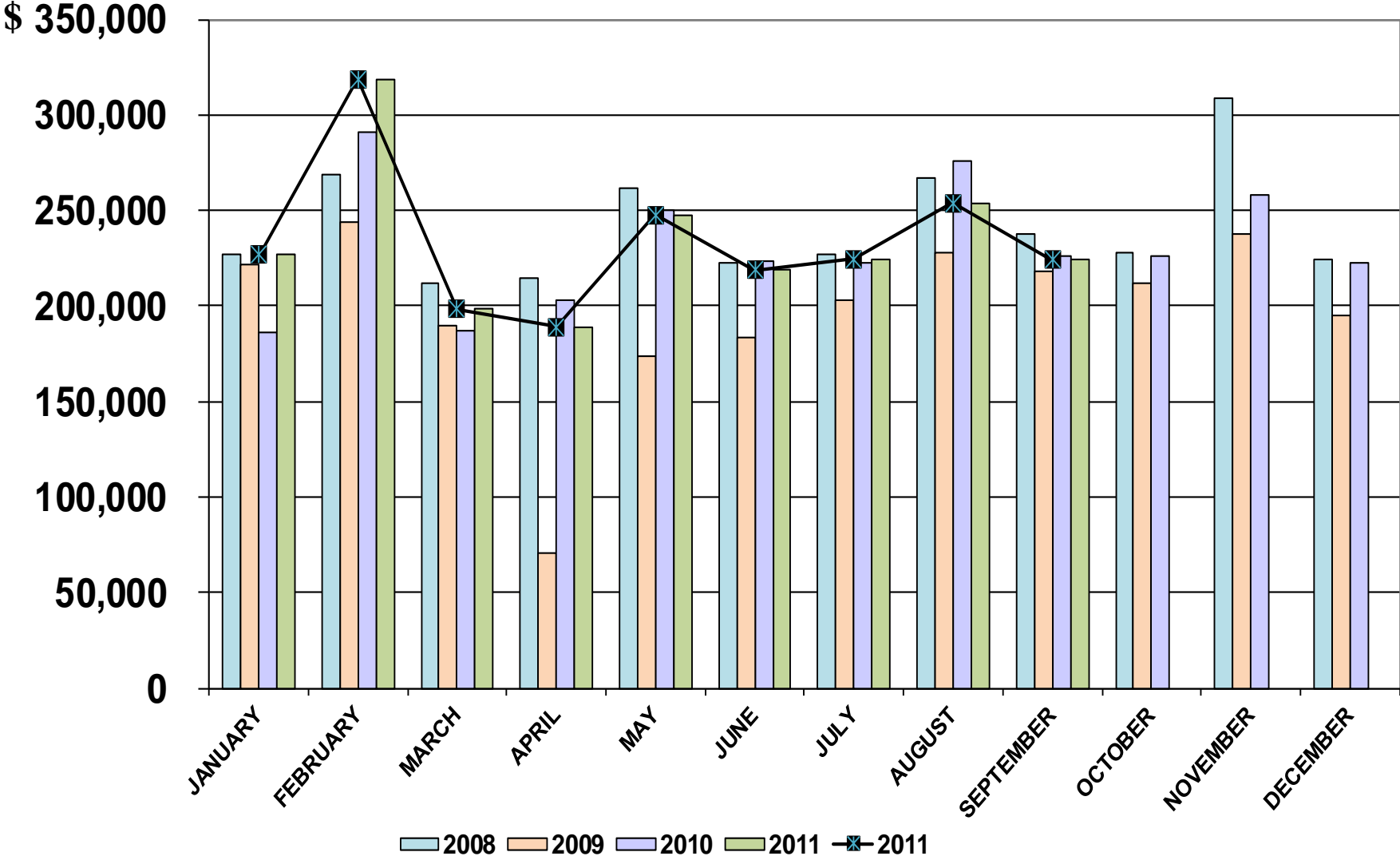
Equally as important as Property Tax. The City of Port Orchard imposes a 1% Sales Tax.

# Sales Tax Collection

	Actual	Budgeted
2008	2,898,058	
2009	2,377,791	
2010	2,774,194	
2011		2,740,000
2012		2,800,000

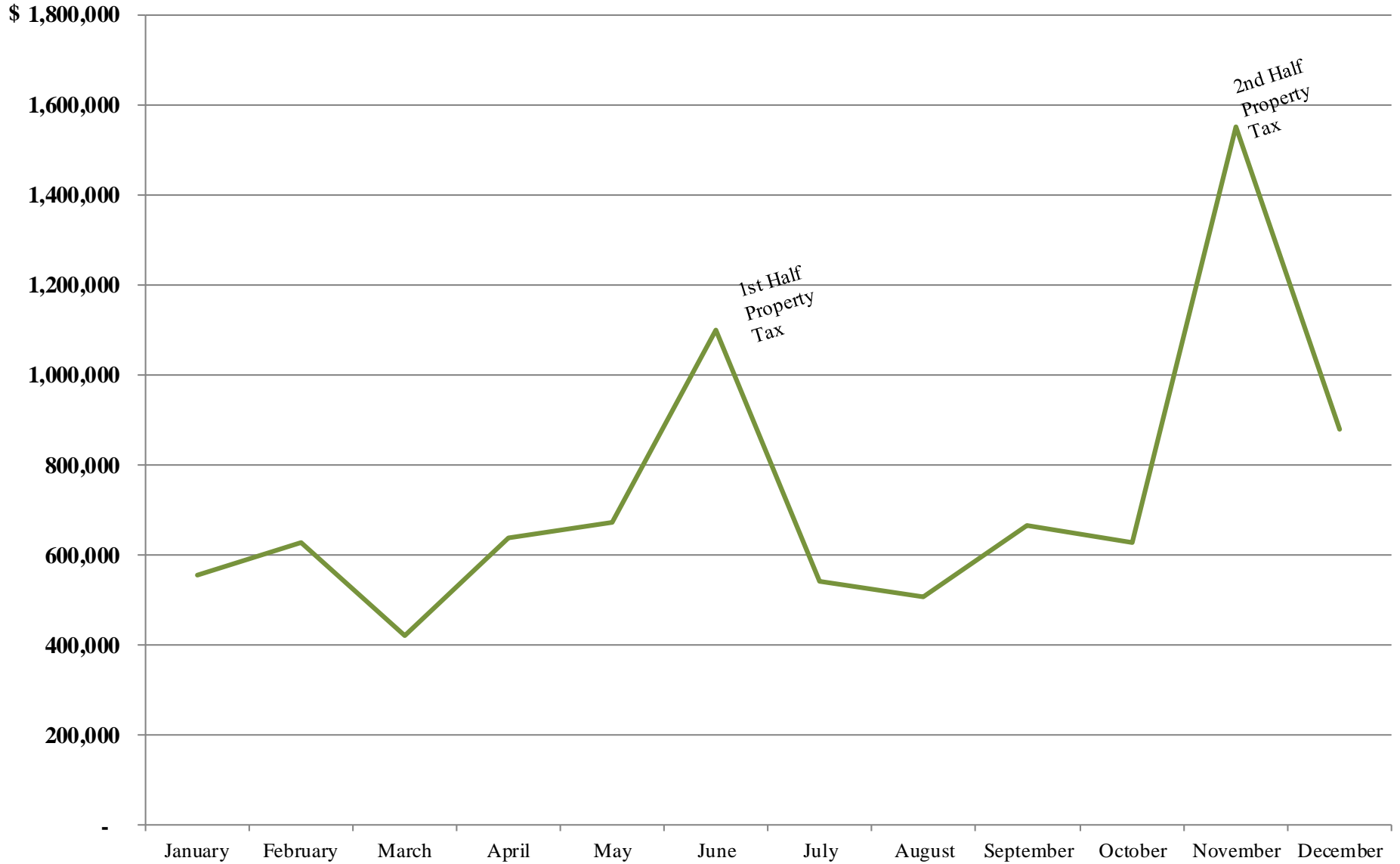
Year-to-date  
+ 4.0%

# SALES TAX COLLECTION 2008 - 2011



# Seasonal Revenue Flow

## All Revenues



Thank you...

This concludes my remarks.

Questions?