

JONES  JONES

ARCHITECTS  
LANDSCAPE ARCHITECTS  
PLANNERS

PROPOSAL FOR

# MCCORMICK VILLAGE PARK MASTER PLAN

APRIL 2010

ARCHITECTURE + LANDSCAPE ARCHITECTURE + PLANNING



COMMITTED TO PLACE, COMMUNITY IDENTITY AND NATURE



8 April 2010

93119.200

City of Port Orchard  
Planning Department  
216 Prospect Street  
Port Orchard, WA 98366

RE: McCormick Village Park Master Plan Proposal

Dear James Weaver,

On behalf of the Jones & Jones team, we are delighted to submit our proposal for the McCormick Village Park Master Plan project.

The landscape of McCormick Village Park will yield a comprehensive network of streams, trails, forest and communities. It is a testament to the community of Port Orchard's vision and planning that this park will be created to provide significant open space for future generations. Our team is knowledgeable with the physical and community landscape of the Kitsap Peninsula and its watershed. We work well with Puget Sound communities, because we:

1. Listen with respect – We spend time with clients and stakeholders to understand the disparate needs and desires of community members. We spend time in the landscape, listening to the land, the water, and living things.
2. Build connections – We identify potential links with community businesses and organizations, with existing trail systems, and with habitat connectivity to enhance the greater open space network.
3. Provide parks of enduring and lasting value – We implement community visions using local, sustainable materials and processes so the parks themselves reveal their underlying ecology.

Jones & Jones is locally recognized for creative problem solving, developing new standards of service and our proven ability to coordinate the efforts of various project participants. We offer a core group of highly qualified professionals with proven expertise to provide and coordinate the full range of visioning and design services that you require for the project.

We thank you for your consideration of our team's proposal, and we look forward to being involved in such an important undertaking for such a magnificent park.

Sincerely,



Marfo Campos, AIA, ASLA  
Principal-in-Charge

Cory Parker, ASLA, LEED AP  
Project Manager





## Firm Profile

### JONES & JONES

#### Architects + Landscape Architects + Planners



Parks and Open Space

Jones & Jones is an internationally renowned design and planning firm founded in 1969 to bring an integrated approach to the planning and design of built environments and the conservation of natural and cultural resources. Throughout 40 years of practice, the firm has built a reputation for award-winning excellence in a number of specialties including parks, trails, greenways, nature and visitor centers, museums, natural resource planning, cultural resource preservation, and river and highway corridor planning and design. Each completed project, regardless of size or type, has seamlessly blended natural and cultural elements in a way that responds to the site, community, and needs of the users.



Trails and Greenways

We specialize in public projects involving complex issues and the diverse interests of multiple stakeholders, including work for various municipalities, county, state, federal agencies, and tribal governments.

We see communities in a regional context—as interconnected systems of mutually dependent resources, and we honor the rhythms of nature, culture, and community. We apply these principals with success to projects all over the world, seamlessly blending natural, cultural, and built elements to express the essence of place, on both site to regional scales. We believe that improving the balance of the natural and built environment is good design and good business.



Art in the Landscape

Our position of leadership in renewing landscapes was recognized in 2003 by the American Society of Landscape Architects with its highest honor, choosing Jones & Jones as the first recipient of the Firm-of-the-Year Award. The Society recognized Jones & Jones for:

*"...establishing new standards of excellence in analysis, creative design, and the practice of landscape architecture. For more than thirty years, its principals and associates have shared their talents and inspiration with students and colleagues. Jones & Jones is known both for the unique culture it has created and its philosophy of embracing that which is challenging and unexplored. Its work and its commitment to future generations have created an enduring legacy."*



Natural Infrastructure

**Location**  
Seattle, Washington

**Organization**  
Corporation

**Staff**  
32

#### Team

Mario Campos, AIA, ASLA • 26 years at Jones & Jones  
Cory Parker, ASLA, LEED AP • 9 years at Jones & Jones  
Karen Davis Smith, LEED AP • 2 years at Jones & Jones  
Marina Alvarez • 3 years at Jones & Jones

JONES  JONES

ARCHITECTS  
LANDSCAPE ARCHITECTS  
PLANNERS





## Understanding & Approach

Set on a ridge between Anderson Creek and a new housing development, McCormick Village Park offers the community of Port Orchard a unique combination of accessible nature and proximity to people. As the visitor moves along the dirt road bisecting the park, they experience light streaming through the Douglas fir canopy. This play of light in the forest could be the inspiration for a future park design of clearings, paths and fields within the forest setting, welcoming people to experience the natural landscape of the peninsula.

The future park will offer the citizens of Port Orchard both passive and active recreational opportunities, as well as a place to gather and learn about the natural ecosystem of forest, wetland and stream. Those citizens then will give voice to the park opportunities, shaping and defining the park plan. The citizens and their representatives will lead the planning process, so that all voices are heard. By involving interested citizens, the City builds a constituency of park stewards. More than visitors, these park stewards could provide volunteer work parties to remove Scotch broom, raise funds, and even act as “park hosts” during outdoor events and gatherings.

It is that dual nature of park planning, of working with the landscape and people, that drives design at Jones & Jones. Every place is unique with its own set of challenges and opportunities. We let each unique landscape and each unique person speak before facilitating the design of a park. Our approach to the McCormick Village Park would be predicated on the following three foundations:

**Listening** – We listen to the people who will be managing, visiting and maintaining the park. Their voices express the needs of the community that then drive the design. We listen to the landscape. We delve into the ecosystem of soils, plants and water for design inspiration.

**Opening the forest** – To create a park, the forest will be gently opened up to create play spaces and gathering areas. It will be opened to light and opened to people, providing an accessible place to gather and interpret the forest’s natural history.

**Designing simply** – The ultimate park design should not compete or detract from the beauty of the setting. By using simple, elegant forms, local materials and minimally intrusive earth movement, the park plan can lower installation costs and create an enduring park.

Throughout the park plan process we will develop design matrices to assist the community in prioritization of recreational opportunities. We are currently using these decision matrices to guide recreational programming for small towns in the Pacific Northwest. A clear and comprehensive matrix, combined with illustrative drawings, provides community members with a foundation for design and decision making.



*wetland*



*homes – context*

*Sword ferns at park site*



## Tasks and Schedule



Trail network

The approach of the Jones & Jones design team highlights our commitments to:

- Develop a close partnership with the planning staff with the Parks Subcommittee staffs to assure that we capture the best ideas, resource information, mutual support and follow-up on implementation;
- Listen to the community, involve community members in the actual work of preparing the plan and projects, and draw the best out of the community to create a positive vision for prosperity and for guiding change;
- Bring the best technical assistance to the community, to local planning staff and to all citizens to achieve the community's vision; and
- Meet all planning and design requirements on time, on budget and with excellent quality



Native Growth Protection Easement

TASK	PERIOD	STAFF
<b>Site Analysis and Program</b>	<b>May to June</b>	
Set goals		MCC, CAP*
Compile base information		MSA
Analyze site based on environmental, scenic and human movement factors, paying particular attention to health of the forest, future development plans and accessible points. Site analysis will include transects through forest to assess health, diversity and features to preserve		CAP, MSA
Assess community recreation needs		CAP
Develop park program based on community input		CAP, KDS
Assist with May 12th park sub-committee meeting (Goals)		CAP
Assist with June 9th park sub-committee meeting (Programming)		CAP
<i>Deliverable: Letter report summarizing goals and program</i>		
<b>Opportunities and Constraints</b>	<b>June to July</b>	
Develop opportunities and constraints based on park sub-committee input, programming and environmental assessment		CAP, KDS, MSA
Assist with July 14th park sub-committee meeting (Recommend opening this meeting up to the broader public for park process update and feedback)		MCC, CAP
<i>Deliverable: Opportunities and Constraints map and narrative</i>		



### Draft Park Master Plan Alternatives Study

July to August

Develop three draft park alternatives using analysis, opportunities and constraints, and community input. At a minimum, each alternative will protect ecologically sensitive areas, provide community recreation opportunities, connect with existing trail connections and meet federal and state requirements (i.e. ADA).

MCC, CAP,  
KDS, MSA

Present alternatives to Aug 11th park sub-committee for revisions  
CAP

*Deliverable: Three draft park alternative plans*



Road bisecting park site

### Final Park Master Plan Alternatives Report

Aug to Sept 24th

Revise three draft alternatives and recommend best alternative

CAP, MSA

Write narrative of alternative process and description; compile previous reports into a final report

CAP, MSA

Present alternatives to public, Planning Commission and City Council in October

MCC, CAP

*Deliverable: Park Master Plan Alternatives Report*

### Design and Capital Facilities Preparation

October to December

Estimate costs for preferred alternative

CAP

Provide permit timeline, SEPA checklist and phasing of preferred alternative implementation

MSA

Develop preliminary design guidelines for the preferred alternative, including a unified design vocabulary with sketches or pictures of site furniture, lighting, paths, ballfields and park structures

CAP, KDS

Develop an interpretive sign and way-finding plan overview to guide future design and provide story ideas for park forest interpretation

CAP, MSA

Compile analysis, alternatives, plans, design and capital facilities information in one final park master plan report

MSA

Present preferred alternative information to City Council and the public

CAP

*Deliverable: Final report and electronic files of plans, drawings*



Adjacent wetland

\* MCC – Mario Campos, Principal-in-Charge; CAP – Cory Parker, Project Manager/  
Landscape Architect; KDS – Karen Smith, Architect; MSA – Marina Alvarez, Landscape  
Planner



*Snoqualmie Point Community Park offers an outstanding vista of the Cascade Mountains and the working farms, forests, and towns of the Snoqualmie River Valley.*



## Relevant Experience

**Necanicum Estuary Natural History Park**

**Ravensdale Park Master Plan**

**Washington Parks Sound Vision**

**Sitka Waterfront Implementation Plan**

**Snoqualmie Point Community Park Master Site Plan and Design**

**North SeaTac Park**

**Jefferson Memorial Forest**

**Vancouver Land Bridge**

**Mercer Slough Nature Park and Environmental Education Center**

**Rattlesnake Lake Recreation Area and Cedar River Watershed Education Center**

**Cedar Lake Park and Trail**



## NECANICUM ESTUARY NATURAL HISTORY PARK

SEASIDE, OREGON

CITY OF SEASIDE PUBLIC WORKS



**Jones & Jones developed a plan for a new type of park: a park that weaves the natural history of a place into the small town fabric of the Oregon Coast. The Necanicum Estuary Natural History Park will be a gateway to the coast and the many stories of people living in an estuary.**

### REFERENCE

Neal Wallace, Public Works Director  
City of Seaside Public Works  
989 Broadway  
Seaside, OR 97138-7826  
p 503 738 5112

The park will be a welcoming hub at the center of a vast network of open space, trails, and habitat that stretches to the Columbia River and the headwaters of the Necanicum River. We combined interpretive opportunities, potential restoration and preservation of estuary and forested wetland environments, and community gathering places into a network of small open spaces, structures and interpretive elements. Together these elements will form a park rooted in the natural and cultural environment of the coast. Ultimately, the City of Seaside will be seen as a city within a park that includes a necklace of restored rivers, coast, and forest.

### FACTS

A park at three scales: the watershed, the estuary, and individual sites

Three target audiences: the Oregon Coast tourist, the Portland vacationer, and the Seaside resident

### BENEFITS

Appropriate public access to the estuary and environs

Restoration of estuarine habitat

Community engagement with the living ecosystem



## RAVENSDALE PARK MASTER PLAN

RAVENSDALE, WASHINGTON

RAVENSDALE PARK FUND AND KING COUNTY PARKS



**A rural town's history of mining and baseball inspired the renovation of this park located at the center of Ravensdale.**

### REFERENCE

T J Davis, Community Partnership  
Grants (CPG) Coordinator  
King County Dept of Natural Resources  
& Parks  
201 S Jackson St Ste 701  
Seattle, WA 98104-3855  
p 206 296 8476

Working with diverse and conflicting interests—including local residents, conservationists, and advocates for sports facilities—Jones & Jones's master plan incorporates neighborhood gathering space, little league practice fields, and areas for those looking for a quiet retreat. Several sports fields will be surrounded by open areas, trees, and trails. Design elements such as rust-colored metal and wood in various structures balance the park's energy with a feeling of rural tenacity.

The result is a sensitively designed park that supports a growing region's need for active spaces as well as preservation and enjoyment of nature.

### FACTS

- 43-acre park bordered by natural areas
- Bicycle trail networks linked with park border paths
- Gracie Hansen Community Center once housed entertainment for the 1962 World's Fair

### BENEFITS

- Year-round public gathering space
- Athletic fields for youth
- Regional trail connections



## WASHINGTON PARKS SOUND VISION

DES MOINES, BELFAIR, & COUPEVILLE, WASHINGTON

WASHINGTON STATE PARKS & RECREATION COMMISSION



**The Governor and Legislature asked Washington State Parks to create model projects that would demonstrate to Washington residents how to care for Puget Sound.**

The Jones & Jones team worked with State Parks to develop a Green Vision Plan for Saltwater, Twanoh, and Fort Casey State Parks. The plan was prepared through a coordinated planning effort in response to the Governor's Puget Sound Initiative and demonstrates the latest concepts in best management practices, low impact development, and sustainable design. When the vision plan is

executed for these three state parks, each park will model green design strategies that ultimately protect and enhance the overall health of Puget Sound.



## SITKA WATERFRONT IMPLEMENTATION PLAN

SITKA, ALASKA

CITY AND BOROUGH OF SITKA



**Jones & Jones is developing a plan that helps revitalize the Shoreline District of Sitka, from an industrial to mixed-use area.**

The project consists of design and construction documents for visitor facilities, a shoreline sea walk, interpretive exhibits, wayfinding and orientation signage, landscape and streetscape amenities, and pedestrian improvements.

Once completed, the Waterfront Plan will provide Sitka residents and visitors an integrated series of improvements, a continuous multi-modal corridor, a walkable downtown, and connections to neighborhoods.

### FACTS

1-mile pedestrian sea walk connecting downtown neighborhood districts

A framework for coordinated phased implementation

### BENEFITS

Gateway to city and interior

### REFERENCE

Scott Brylinsky  
Public Works Operations Manager  
100 Lincoln Street  
Sitka, AK 99835  
p 907.747.1829



# SNOQUALMIE POINT COMMUNITY PARK MASTER SITE PLAN AND DESIGN

SNOQUALMIE, WASHINGTON

WASHINGTON STATE DEPARTMENT OF TRANSPORTATION



**Snoqualmie Point Community Park offers an outstanding vista of the Cascade Mountains and the working farms, forests, and towns of the Snoqualmie River Valley.**

## REFERENCE

Cynthia Welti, Executive Director  
Mountains to Sound Greenway Trust  
911 Western Ave Ste 523  
Seattle, WA 98104-1047  
p 206 382 5565

Jones & Jones developed the site plan and design for this scenic viewpoint park. The challenges included integrating an array of visitor amenities on a narrow site, devising forest management strategies to sustain the view, and designing facilities fitting the regional character. Various gathering places are integral to the design, including spaces for activities such as picnicking, walking, and stargazing. Key improvements include a sculptural log shelter, crafted stone parapet, and sweeping circular pathways.

Snoqualmie Point is a legacy park equal to its inspiring view.

## FACTS

- 8.5 acres
- Shelter
- Amphitheater

## BENEFITS

- Scenic conservation
- A Snoqualmie Valley showcase
- Community recreation
- Connection to regional trails

## Best Special Project, 2008

Federal Highway Administration and Washington State Department of Transportation



## NORTH SEATAC PARK

KING COUNTY, WASHINGTON

KING COUNTY DIVISION OF CAPITOL PLANNING & DEVELOPMENT,  
THE PORT OF SEATTLE, AND THE CITY OF SEATAC



**The Port of Seattle began purchasing property north of SeaTac International Airport as part of a noise remediation program in the 1970s.**



The people of the Greater Highline and SeaTac areas, seeing the land under-utilized, began to envision a park and trail network where their children could play and relax.

This vision has grown and changed with time, but the goal of rehabilitating a neighborhood landscape to provide recreational opportunities in a parklike setting to as many area residents as possible has remained constant. Jones & Jones combined active and passive recreation with interpretation and education to utilize the park's natural environment and make the vision a reality. The park's natural features

and topography regulate and cleanse surface water. Landscaped buffers around the perimeter of the site accommodate trails and separate active park uses and night lighting from surrounding neighborhoods. Construction of the first phase of development includes several pedestrian plazas and trails, two illuminated soccer fields, parking, pocket neighborhood parks, and a baseball quad complex.

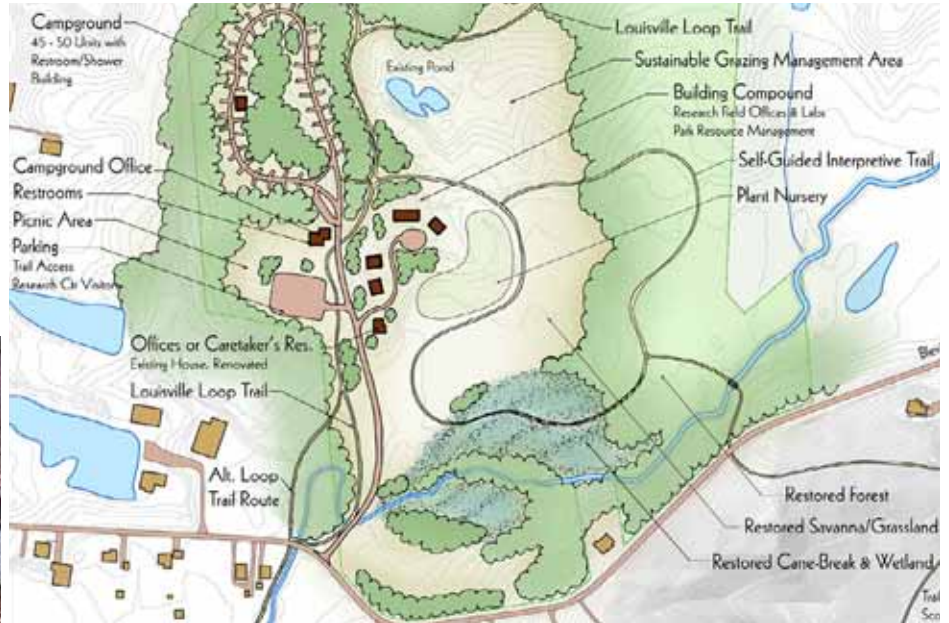
North SeaTac Park provides much-needed open space and recreation facilities for the surrounding neighborhoods.



## JEFFERSON MEMORIAL FOREST

LOUISVILLE, KENTUCKY

LOUISVILLE-JEFFERSON COUNTY METRO GOVERNMENT



**This nature preserve on the southern fringe of greater metropolitan Louisville encompasses one of the largest urban forests in the United States. Jones & Jones prepared a master plan to guide the forest's improvements and stewardship.**

Established in the 1940's to commemorate Kentucky's war veterans, the preserve's land area has expanded, along with its recreational activities and environmental education programs. The master plan addresses the pressing need for new facilities, enhanced programs, better access and circulation and improved resource management.

Through an intensive public and stakeholder involvement process, the plan ensures the continued recreational and environmental value of this unique regional asset.

### FACTS

- 6,700 acres
- Diverse biotic community
- Sundry recreational activities and educational programs

### BENEFITS

- Premier regional venue for environmental education programs
- Only place in Metro Louisville offering camping, equestrian trails and abundant wildlife

**Merit Award, 2009**

*American Society of Landscape Architects  
Kentucky Chapter*



## VANCOUVER LAND BRIDGE

VANCOUVER, WASHINGTON

THE CONFLUENCE PROJECT, NATIONAL PARK SERVICE, CITY OF VANCOUVER AND WASHINGTON STATE DEPARTMENT OF TRANSPORTATION



**The Vancouver Land Bridge reconnects historic Fort Vancouver to the city’s Columbia River waterfront, restores the natural landscape continuum from upland prairie to river edge, and provides the missing link in a regional Discovery Trail system.**

This pedestrian bridge, which sweeps across State Route 14 in a simple, elegant arch, also commemorates the confluence of rivers and indigenous people encountered by the Lewis and Clark expedition.

Jones & Jones’s design draws on the cultural significance of the circle, a Native American symbol often used to represent the life cycle. A multi-use trail reconnects the fort to the river, meandering across the bridge through an interpretive landscape of prairie, grassland and forest native plants, a rain water collection system and artworks created by the design team and native artists.

### FACTS

- 40-foot-wide, earthen-covered pedestrian bridge
- 3,800 foot long multi-use trail
- Federal, state and private funding
- Sustainability guidelines
- Rainwater collection system irrigates native plants

### BENEFITS

- Restored landscape continuum
- Gateway to the City of Vancouver
- Connects the city to its waterfront
- Links regional Discovery Trail system
- Historic landscape interpretation

### REFERENCE

Jane Jacobsen, Director  
Confluence Project  
1701 Broadway St Ste 144  
Vancouver, WA 98663-3436  
p 360 693 0123

### Top Honor Award, 2009

*The Waterfront Center*

### Top Projects Award, \$5–\$15 Million Category, 2008

*Oregon Daily Journal of Commerce*



## MERCER SLOUGH NATURE PARK AND ENVIRONMENTAL EDUCATION CENTER

BELLEVUE, WASHINGTON

CITY OF BELLEVUE, DEPARTMENT OF PARKS & RECREATION / PACIFIC SCIENCE CENTER



### PARK FACTS

- Home to more than 100 bird species and several dozen mammal species
- Seven miles of trails, including a canoe trail
- Minutes from city center

### EDUCATION CENTER FACTS

- Low impact development, natural ventilation system, certified wood and on-site stormwater management
- Integrated landscape and buildings
- Preservation of the majority of mature trees on site
- LEED™ Gold certified
- 10,000 square feet
- \$10.8 million construction cost

### BENEFITS

- Wetland preservation
- Habitat protection
- Minimal site impact
- Hands-on wetland education

**Mercer Slough Nature Park is a 320-acre wetland nature park in the heart of the urban Seattle/Bellevue area. Our work here began 20 years ago with the original master plan and culminated with the recent completion of the award-winning Mercer Slough Environmental Education Center.**

The master plan outlined opportunities for educational, interpretive and passive recreational uses, and led to a successful open space bond issue. We subsequently designed the park's interpretive trails, viewpoints and facilities, including structures for the Slough's historic blueberry farm.

The Environmental Education Center, completed in 2008, is the gateway to Mercer Slough. Sited with minimal disturbance to the landscape, the Center has two classroom buildings, a multipurpose building, a visitors center and two wetlabs. The buildings

are elevated as much as 30 feet above a sloping site into the tree canopy. The Center is a premier facility for the teaching and study of wetland ecosystems in an urban setting.

Mercer Slough provides critical natural infrastructure as well as a major recreational and educational facility for the region.

### REFERENCE

Patrick Foran, Director  
City of Bellevue - Parks & Community Services  
Planning & Development Division  
PO Box 90012  
Bellevue, WA 98009-9012  
p 425 452 6881



**Honor Award, 2009** *(Education Center)*  
*American Institute of Architects, Seattle Chapter*

**Green Globe Award, 2009**  
**Leader in Sustainable Building** *(Education Center)*  
*King County*

**Bronze Merit for "Future Value to the Profession," 2009** *(Education Center)*  
*American Consulting Engineers Council*

**John H. Stanford Education Achievement Award, 2007** *(Education Center)*  
*Cascade Land Conservancy*

**What Makes it Green? 2007**  
**Unbuilt Category** *(Education Center)*  
*American Institute of Architects, Seattle Chapter*

**Honor Award, 1995** *(Master Plan)*  
*"Excellence on the Waterfront,"*  
*The Waterfront Center*

**Merit Award for Physical Plans, 1990** *(Education Center)*  
*Washington Chapter, American Planning Association*  
*and Planning Association of Washington*



## CEDAR RIVER WATERSHED EDUCATION CENTER AND RATTLESNAKE LAKE RECREATION AREA

CEDAR FALLS, WASHINGTON

SEATTLE PUBLIC UTILITIES, WATERSHED MANAGEMENT DIVISION



**Located at the edge of the pristine, 90,000-acre Cedar River Watershed preserve, this unique complex is dedicated to educating greater Seattle residents about the principal source of their drinking water—the Cedar River.**

Jones & Jones's master-planned the lake environs, sited the center on previously disturbed land, and designed the center and recreation area to interpret the natural and cultural history of the forested watershed preserve. The center's educational programs focus on local wildlife and plant communities, forest and timber resources, fisheries, and related scientific research. A network of pedestrian trails connects the Center to the lakeshore recreation area and the water department's administrative headquarters.

The center complex provides a living demonstration of the beauty and value of a healthy watershed. Today the Cedar River Watershed is one of the few completely protected ecosystems in the Pacific Northwest.

### FACTS

- 30,000 visitors per year
- Popular spot for swimming and fishing
- Water quality wetland
- Learning labs for 100 students
- Multipurpose space for 180
- Conference rooms and resource library
- Living roofs
- 21 rain drums pulsing to nature's rhythms
- Water conservation and stormwater detention
- Water quality wetland

**Merit Award—Design, 2004**

*ASLA—National*

**Honor Award—Design, 2003**

*ASLA—Washington Chapter*

**What Makes it Green—Built Category, 2002**

*AIA Seattle*

**Honorable Mention—Outstanding Public Project, 2001**

*Northwest Construction*



## **BENEFITS**

- Hub for Mountains to Sound Greenway recreation
- Model of stewardship
- Place-based education
- Civic link to rural and wild places
- Ecological restoration
- Demonstrated sustainability



## CEDAR LAKE PARK AND TRAIL

MINNEAPOLIS, MINNESOTA

MINNEAPOLIS PARK AND RECREATION BOARD



**This non-motorized commuter parkway and prairie restoration along a converted rail line links residential neighborhoods with the heart of downtown Minneapolis and the Mississippi waterfront.**

Jones & Jones teamed with Richard Haag Associates and Darrel Morrison to create a 4.2-mile parkway connecting Cedar Lake Park (a nature conservancy) with the Mississippi River. The first phase of development provides a vital link through the heart of downtown Minneapolis. Spurred by an active citizens committee, the project is a key element in fulfilling a turn-of-the-century vision of a 52-mile system of parks and parkways connecting the Chain of Lakes to the Mississippi River.

### FACTS

Commuter and recreational bicycle and pedestrian trails

Courses through natural areas, historic neighborhoods and downtown

### BENEFITS

Restored wetlands, prairies and forests

Non-motorized transportation corridor

Public recreation and enjoyment of nature

Catalyst for downtown economic development

### Significant Achievement in Design and Aesthetic Excellence Award, 1995

*Committee on Urban Environment (CUE)*

### "Environmental Excellence" for ISTEA Projects, 1995

*Federal Highway Administration*

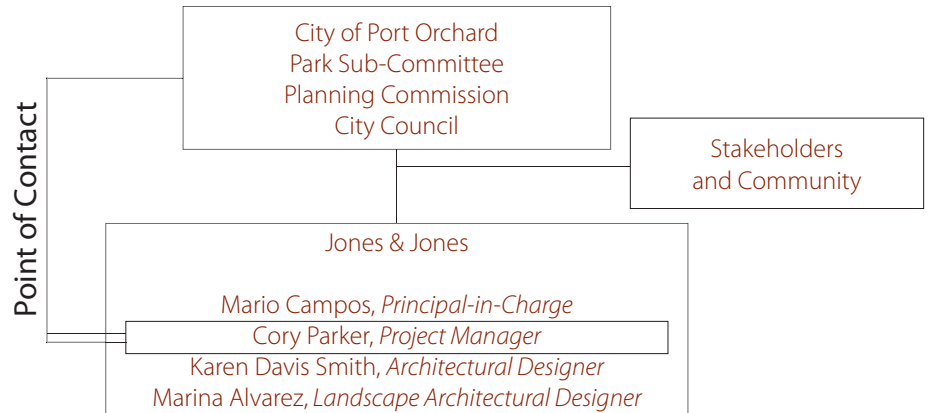
### Environmental Awareness Award, 1995

*Minnesota Chapter, American Society of Landscape Architects (ASLA)*



## Project Team

### ORGANIZATION CHART



*Jones & Jones has partnered with the City of Bellevue for over 20 years on the planning and design of the Mercer Slough Nature Park and Environmental Education Center*

## MARIO CAMPOS, AIA, ASLA

Principal-in-Charge



A Principal Architect and Urban Designer with Jones & Jones, Mario has directed the design of large multi-disciplinary architectural, urban, natural resources, community development, and environmental conservation projects for public and private agencies and for government organizations and NGOs.

His approach to planning and design emerges from strong regional, cultural, and traditional sources, closely rooted to the land, the environment, and the economy incorporating the principles of participatory design. This approach creates cooperative situations that lead to successful resolution of complex issues through a comprehensive and consensus-reaching process. Mario's skills include sound management and the ability to communicate with diverse groups and organizations, bringing heightened sensitivity to diverse ethnic groups, cultural organizations, and environmental issues. His professional practice includes planning and design of cultural centers and educational facilities, museums, public places, and parks.

Mario served on the Pioneer Square Preservation Board for six years and participated in updating the visioning for the Pioneer Square Master Plan. In addition, Mario is active in the Mayor's Institute on City Design and has presented papers at institute conferences held in Phoenix, Arizona, Monterey, California and Austin, Texas.

### RELEVANT EXPERIENCE

- Ravensdale Park Master Plan, Ravensdale, Washington
- Cedar Lake Park Trail Master Plan and Trail Development, Minneapolis, Minnesota
- Balboa Park Land Use, Circulation, and Parking Study, San Diego, California
- Cesar Chavez Park, Seattle, Washington
- Centennial Campus Master Plan, Olympia, Washington
- Gorge Park Master Plan, Spokane, Washington
- Mountains To Sound Greenway Kiosks Siting Plan, Seattle, Washington
- Mt. Baker Ridge Viewpoint Park, Seattle, Washington
- Oxbow Park Development, Seattle, Washington
- Snoqualmie Point Community Park, Snoqualmie, Washington
- Spokane River Centennial Trail, Spokane, Washington
- Wrangell Downtown Revitalization Conceptual Design, Wrangell, Alaska
- Sitka Waterfront Master Plan, Sitka, Alaska
- Pioneer Square Neighborhood Plan, Seattle, Washington
- South Park Neighborhood Vision Plan, Seattle, Washington
- Skokomish Highway 101 Corridor Master Plan, Skokomish, Washington

JONES ■ JONES

ARCHITECTS  
LANDSCAPE ARCHITECTS  
PLANNERS

## CORY PARKER, ASLA, LEED AP

Project Manager



Cory has 17 years of experience as a landscape architect, managing environmental planning, parks and open space, as well as stream and river restoration projects. Since joining Jones & Jones in 2001, he has focused on landscape restoration for the rural community of Ravensdale, a dairy farm on the Nisqually, and a state park on the Puget Sound. He listens to clients and voices from other disciplines to resolve conflict and understand a place.

Before joining Jones & Jones, Cory worked with L.C. Lee & Associates, collaborating with wetland ecologists, botanists, and soil scientists to re-create complex, riparian ecosystems. He has also worked for the Natural Resources Conservation Service, designing master plans of parks, urban stream corridors and streets for local governments and tribes.

Cory received his Master of Landscape Architecture degree from the University of Washington (with a thesis on people's perception of urban riparian landscapes) and his Bachelor's degree in landscape architecture from the University of California at Davis.

### RELEVANT EXPERIENCE

- Necanicum Estuary Natural History Park Vision Plan, Seaside, Oregon
- The Confluence Project–Sacajawea State Park Final Design, Pasco, Washington
- Ravensdale Park Master Plan, Ravensdale, Washington
- Lake Roosevelt National Recreation Area Shoreline Management Plan, Coulee Dam, Washington
- Washington State Parks Sound-Friendly Vision Plan, State of Washington
- Wilcox Farms Salmon Trail Master Plan, Roy, Washington
- Fauntleroy Creek Restoration, Seattle, Washington
- Full Circle Farm Restoration and Interpretive Plan, Carnation, Washington
- Paynes Prairie Sheetflow Restoration Public Use Conceptual Master Plan, Gainesville, Florida
- Semiahmoo Spit Master Plan, Seattle, Washington
- Seattle Chinese Garden, Seattle, Washington
- UW-B/CCC Ecosystem Restoration with L.C. Lee & Associates, Bothell, Washington

## KAREN DAVIS SMITH, ASSOCIATE AIA, LEED™ AP

Architectural Designer



Karen Davis Smith strives to create meaningful places of beauty through the union of landscape and architecture. She has a breadth of experience as a designer and project manager, and has led teams on a diversity of project types. She has been engaged in all aspects of the architectural, planning, and construction process. Her passion for sustainable and innovative design is evidenced by her involvement with the AIA Committee on the Environment, training with the Biomimicry Guild, and as a past organizer and cofounder of the Seattle-based Sustainability Salon roundtable group. She has technical expertise in the LEED process, is a LEED Accredited Professional, and has been invited to lecture on sustainability issues.

Karen joined Jones & Jones in 2008 as the Animal Care and Sustainability Lead on the Al Ain Wildlife Park project in the United Arab Emirates and has over 13 years of experience. She enjoys designing healthy spaces that benefit people, wildlife and the environment.

### RELEVANT EXPERIENCE

- Marra-Desimone Park Long Term Development Plan, City of Seattle, Seattle, Washington: with Boxwood
- Red Mountain Viticulture Area Master Plan, Red Mountain, Washington: with Boxwood
- Point Defiance Zoo Animal Health Care Facility, Tacoma, Washington: with Boxwood
- Lewis Creek Park Visitor Center, Sustainability Advisor, Bellevue Parks, Bellevue, Washington
- City of Seattle Joint Training Center, City of Seattle, Washington
- Al Ain Wildlife Park Master Plan, Al Ain Zoo and Aquarium Public Corporation, Abu Dhabi, United Arab Emirates
- Red Wolf Exhibit Biomimicry Concepts, Point Defiance Zoo & Aquarium Tacoma, Washington
- PAWS Campus Planning, Progressive Animal Welfare Society, Lynnwood, Washington
- Mt. Baker/McClellan Light Rail Station, Seattle, Washington

JONES ■ JONES

ARCHITECTS  
LANDSCAPE ARCHITECTS  
PLANNERS

## MARINA ALVAREZ

Landscape Architectural Designer



Marina Alvarez is inspired to create places that improve both the cultural and ecological health of the landscape. Educated at the University of California, Davis with a Bachelor's Degree in Evolution & Ecology and at the University of Michigan with a Master's Degree in Landscape Architecture, she brings a diverse set of graphic and analytical design skills to Jones & Jones. In addition to formal academic training as a landscape architect, she is interested in understanding how a design may influence human interaction and behavior, and applying this experience to the design process.

Marina's project experience at Jones & Jones includes master planning for large zoos and parks, as well as site and trail planning for small parks and farms. She recently took part in the completion of the Ravensdale Park Master Plan and the Midway Conceptual Site Plan Report for the Papahānaumokuākea Marine National Monument Management Plan. She is currently a project team member for the Dublin Zoo African Savannah and Dublin Zoo Children's Farm projects in Dublin, Ireland.

### RELEVANT EXPERIENCE

- Sitka Waterfront Implementation Plan, Sitka, Alaska
- Wanapum Heritage Center, Desert Aire, Washington
- Jefferson Memorial Forest Park Master Plan, Louisville, Kentucky
- Lake Forest Park Green Infrastructure Plan, Washington
- Ravensdale Park Master Plan, Seattle, Washington
- Full Circle Farm Restoration and Interpretive Plan, Carnation, Washington
- Midway Atoll Conceptual Plan, Northwest Hawaiian Islands National Marine Monument
- Wilcox Farms Salmon Trail Master Plan, Roy, Washington
- Nisqually River Watershed ILARIS Plan, Nisqually River Basin, Washington
- Puget Sound Partnership Action Plan—Land Use and Habitat, Puget Sound Partnership, Puget Sound, Washington
- Lake Roosevelt Shoreline Management Plan, Coulee Dam, Washington

JONES ■ JONES

ARCHITECTS  
LANDSCAPE ARCHITECTS  
PLANNERS



*Vancouver Land Bridge, designed by Jones & Jones, restores a historic connection between the Fort Vancouver area and the Columbia River through trails, art and native plantings.*



## City's Standard Professional Services Agreement

We have reviewed the City's Standard Professional Services Agreement and, if selected, we will execute the agreement.

### Recent Awards

- |      |  |      |  |
|------|--|------|--|
| 2010 | Mercer Slough Environmental Education Center<br><i>Honor Award for General Design</i><br>American Society of Landscape Architects, Washington Chapter (WASLA)                | 2005 | The Greenprint for King County<br>King County, Washington<br><i>Honor Award</i><br>American Planning Association/<br>Planning Association of Washington                                    |
| 2010 | Cesar Chavez Park<br><i>Special Mention for General Design</i><br>American Society of Landscape Architects, Washington Chapter (WASLA)                                       | 2004 | Cedar River Watershed Education Center<br>Cedar Falls, Washington<br><i>Merit Award</i><br>American Society of Landscape Architects  |
| 2009 | Mercer Slough Environmental Education Center<br>Bellevue, Washington<br><i>Honor Award</i><br>AIA Seattle  | 2003 | Cedar River Watershed Education Center<br>Cedar Falls, Washington<br><i>Honor Award—Design</i><br>American Society of Landscape Architects, Washington Chapter                             |
| 2008 | Snoqualmie Point Viewpoint Park<br>Snoqualmie, Washington<br><i>Best Special Project</i><br>Federal Highway Administration and Washington State Department of Transportation | 2003 | Oxbow Park<br>Seattle, Washington<br><i>Honor Award—Works in Progress</i><br>American Society of Landscape Architects, Washington Chapter  |
| 2008 | Vancouver Land Bridge<br>Vancouver, Washington<br><i>Transportation Award—\$5 Million to \$15 million Category</i><br>Daily Journal of Commerce, Oregon                      | 2003 | Ebey's Landing National Historic Reserve<br>Whidbey Island, Washington<br><i>Merit Award—Historic Preservation</i><br>American Planning Association/<br>Planning Association of Washington |
| 2007 | Mercer Slough Environmental Education Center<br>Bellevue, Washington<br><i>John H. Stanford Education Achievement Award</i><br>Cascade Land Conservancy                      | 2003 | Jones & Jones<br>Seattle, Washington<br><i>Firm of the Year</i><br>American Society of Landscape Architects  |
| 2007 | Mercer Slough Environmental Education Center<br>Bellevue, Washington<br><i>What Makes it Green?</i><br>2007—Unbuilt Category<br>AIA Seattle                                  | 2003 | Jones & Jones<br>Seattle, Washington<br><i>Board of Directors' Special Achievement Award</i><br>Sustainable Seattle  |
| 2007 | Hanford Reach Interpretive Center<br>Richland, Washington<br><i>What Makes it Green?</i><br>2007—Unbuilt Category<br>AIA Seattle   | 2002 | Commons Park<br>Denver, Colorado<br><i>Annual Achievement Award</i><br>Downtown Denver Partnership   |







JONES  JONES

ARCHITECTS  
LANDSCAPE ARCHITECTS  
PLANNERS

105 SOUTH MAIN STREET, SUITE 300  
SEATTLE, WA 98104  
PHONE: 206 624 5702  
[www.jonesandjones.com](http://www.jonesandjones.com)