

**APPENDIX 5**

**PARKS SURVEY OCTOBER 2006 SUMMARY**  
**& PUBLIC COMMENT**

**PARKS SURVEY – OCTOBER 2006  
SUMMARY SHEET**

**How many people in household? (Number of households with--)**

1 Adult	28	1 Child	14	Infant/Preschool	8
2 Adults	74	2 Children	17	Kindergarten	8
3 Adults	2	3 Children	7	Elementary	17
4 Adults	2	4 Children	3	Middle/Jr. High	16
				Senior High	15

**Yearly visits to following facilities. (Answers such as frequently, occasionally, rarely, yes were not included in the tally.)**

Active Club Building	389
Active Club Park	417
Van Zee Park	1596
Central Playfield	409
Paul Powers Park	483
Pedestrian Pier	1164
Etta Turner Park	692
Nick Repanich Park	3768
Boat Launch	629
Walkway along Waterfront	4341

**If you don't use City parks, why not?**

No horseshoe pit  
 Too busy  
 Roads not walker friendly to get to parks  
 Playground equipment outdated  
 No interest  
 Restrooms dirty  
 Don't know where they are  
 Handicapped  
 Negligent upkeep & maintenance  
 Playgrounds need updating  
 No trails  
 Kicked out of Van Zee by soccer group

**Should City parks be reservable?**

Yes	68
No	10

**Should there be a fee for reserving park facility?**

Yes 59  
No 25

Rate City parks	1= Great		5 = Needs improvement		
	1	2	3	4	5
Maintenance	16	18	23	18	11
Cleanliness	17	26	18	20	8
Amenities	9	18	26	17	12

**Is there a need for an RV park?**

Yes 33  
No 53

Need/Priority for following.	1 = Priority 5 = Not necessary				
	1	2	3	4	5
More recreation centers	25	12	21	14	17
More park facilities	27	11	26	12	17
More beach/waterfront access	49	18	15	5	9
More trails	47	18	17	5	10
Purchase land	44	12	18	6	13
Maintain existing facilities	59	21	12	4	4
Road shoulders for walking	63	13	9	5	8
Exercise trails	48	10	21	8	8
Sidewalks	55	16	14	5	8
Baseball fields	11	11	30	20	20
Playgrounds	22	22	27	11	12
Basketball courts	8	18	32	10	16
Soccer fields	12	15	27	18	16
Tennis courts	10	14	32	15	17
Covered picnic areas	25	18	24	17	9
Skateboard/rollerblade area	21	19	28	7	18

**Specify other community needs.**

- Programs geared to younger children
- Something more for teens and young adults
- Parking for downtown
- Parking for existing facilities. Set hours & enforce.
- Bicycle lanes
- Community events center
- More roadway litter pick up
- Mini-golf, go-cart, bm-x trails, bathroom facilities, Gulf War Memorial
- Fix up moldy, ugly downtown
- Clean up
- Sidewalk on both sides from Blackjack Creek to city
- Launching ramps

**Other Needs - continued**

New park in Hull/Melcher area

Community swimming pool

Off-leash dog park

More concerts by the bay

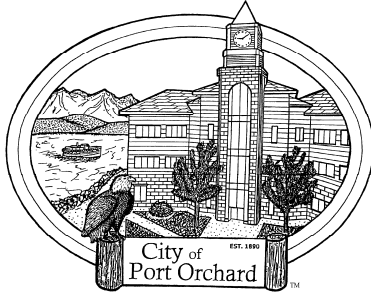
Preserve green space

Unlock restrooms

YMCA-type facility

**Additional comments.**

See survey printout



**City of Port Orchard  
Council Meeting Minutes  
Regular Meeting of April 8, 2008**

**7:00 P.M. CALL TO ORDER AND ROLL CALL**

**PRESENT:** Lary Coppola, Mayor  
Council Members: Mayor Pro-Tem Clauson, Chang, Childs, Colebank,  
Powers, and Putaansuu  
**ABSENT:** Council Members Olin (excused)

**ALSO PRESENT:** Police Chief Townsend, Police Commander Marti, Public Works Director Abed, Development Director Weaver, IT Manager Tucker, City Clerk Merlino, Deputy Clerk Kirkpatrick, and City Attorney Jacoby.

**PLEDGE OF ALLEGIANCE**

Charlotte Garrido led the audience and Council in the Pledge of Allegiance

**CITIZEN COMMENT**

Kathy Lipka requested that the entrance door on the first floor remain unlocked during Council Meetings.

Becky Vanni President of the Local MOMS Club voiced concern with the condition of City parks, noting that the Club had previously met with the Mayor and he suggested they begin attending Council meetings. Based on that meeting the Club began to create some short and long-term goals for park rehabilitation. Ms. Vanni indicated the Club was willing to work with the City on park rehabilitation and that the Club wants to be a part of the solution.

Council Members and the Mayor thanked Ms. Vanni and the Local MOMS Club for being proactive in helping to find solutions for improving City parks and invited the Club to attend future Public Property Committee and City Council meetings.

Council Member Powers arrived at 7:10 p.m.

**APPROVAL OF AGENDA**

The following items were added to Business:

- Discussion Item: Perry Avenue Speeders
- Kitsap Regional Coordinating Council (KRCC)

# America's Playgrounds

## Safety Report Card

DOES PAUL POWERS PARK (2035 Sidney) MAKE THE GRADE?

Evaluate your playground using the following criteria.  
A full explanation of the criteria is on the back of this sheet.

	Yes	No
<b>SUPERVISION</b>		
Adults present when children are on equipment		X
Children can be easily viewed on equipment	X	
Children can be viewed in crawl spaces - none	X	
Rules posted regarding expected behavior		X
<b>AGE-APPROPRIATE DESIGN</b>		
Playgrounds have separate areas for ages 2-5 and 5-12	X	
Platforms have appropriate guardrails		X
Platforms allow change of directions to get on/off structure		X
Signage indicating age group for equipment provided		X
Equipment design prevents climbing outside the structure		X
Supporting structure prevents climbing on it		X
<b>FALL SURFACING</b>		
Suitable surfacing materials provided	X	
Height of all equipment is 8 feet or lower	X	
Appropriate depth of loose fill provided	X	
Six foot use zone has appropriate surfacing	X	
Concrete footings are covered	X	
Surface free of foreign objects – broken beer bottles		X
<b>EQUIPMENT MAINTENANCE</b>		
Equipment is free of noticeable gaps	X	
Equipment is free of head entrapments – slide looks unsafe		X
Equipment is free of broken parts	X	
Equipment is free of missing parts		X
Equipment is free of protruding bolts	X	
Equipment is free of rust – rust on swings		X
Equipment is free of splinters	X	
Equipment is free of cracks/holes – swings have cracks		X
<b>TOTAL POINTS</b>	<b>12</b>	<b>12</b>

### SCORING SYSTEM

Total the number of "Yes" answers in the "Total Points" box in the table.

24 – 20 = A Congratulations on having a SAFE playground. Please continue to maintain this excellence.  
19 – 17 = B Your playground is on its way to providing a safe environment for children. Work on the areas checked 'No'.  
16 – 13 = C Your playground is potentially hazardous for children. Take corrective measures.  
12 – 8 = D Children are at risk on this playground. Start to make improvements.  
7 & = F Do not allow children on this playground. Make changes immediately.

\*\*If any of the gray boxes are marked 'NO', the potential of a life threatening injury is significantly increased. Contact the owner of the playground.

For Additional Resources and Information Contact:

National Program for Playground Safety: 1-800-554-PLAY (7529) ~ [www.playgroundsafety.org](http://www.playgroundsafety.org)

## Explanation of Risk Factor Criteria

### SUPERVISION

- \*1. Since equipment can't supervise children, it is important that adult supervision is present when children are playing on the playground.
- 2. In order to properly supervise, children need to be seen. This question is asking if there are any blind spots where children can hide out of the sight of the supervisor.
- 3. Many crawl spaces, tunnels, and boxed areas have plexiglas or some type of transparent material present to allow the supervisor to see that a child is inside the space. When blind tunnels are present, children cannot be properly supervised.
- 4. Rules help reinforce expected behavior. Therefore, the posting of playground rules is recommended. For children, ages 2-5, no more than three rules should be posted. Children over the age of five will remember five rules. These rules should be general in nature, such as "respect each other and take turns."

### AGE APPROPRIATE DESIGN

- \*1. It is recommended that playgrounds have separate areas with appropriately sized equipment and materials to serve ages 2-5 and ages 5-12. Further, the intended user group should be obvious from the design and scale of equipment. In playgrounds designed to serve children of all ages, the layout of pathways and the landscaping of the playground should show the distinct areas for the different age groups. The areas should be separated at least by a buffer zone, which could be an area with shrubs or benches.
- \*2. Either guardrails or protective barriers may be used to prevent inadvertent or unintentional falls off elevated platforms. However, to provide greater protection, protective barriers should be designed to prevent intentional attempts by children.
- 3. Platforms over six feet in height should provide an intermediate standing surface where a decision can be made to halt the ascent or to pursue an alternative means of descent.
- 4. Signs posted in the playground area can be used to give some guidance to adults as to the age appropriateness of equipment.
- 5. Children use equipment in creative ways which are not necessarily what the manufacturer intended when designing the piece. Certain equipment pieces, like high tube slides, can put the child at risk if they can easily climb on the outside of the piece. The answer to this question is a judgment on your part as to whether the piece was designed to minimize risk to the child for injury from a fall.
- 6. Support structures such as long poles, bars, swing frames, etc. become the play activity. The problem is that many times these structures have no safe surfacing underneath and children fall from dangerous heights to hard surfaces.

### FALL SURFACING

- \*1. Appropriate surfaces are either loose fill (engineered wood fiber, sand, pea gravel, or shredded tires) or unitary surfaces (rubber tiles, rubber mats, and poured in place rubber). Inappropriate surface materials are asphalt, concrete, dirt, and grass. It should be noted that falls from 1 ft. onto concrete could cause a concussion. Falls from a height of eight feet onto dirt is the same as a child hitting a brick wall traveling 30 mph.
- \*2. Research has shown that equipment heights can double the probability of a child getting injured. We recommend that the height of equipment for pre-school age children be no higher than 6 feet and the height of equipment for school age children be limited to 8 feet. \*3. Proper loose fill surfacing must be at the appropriate depth to cushion falls. An inch of sand upon hard packed dirt will not provide any protection. We recommend 12 inches of loose fill material under and around playground equipment.
- \*4. Appropriate surfacing should be located directly underneath equipment and extend six feet in all directions with the exception of slides and swings, which have a longer use zone.
- \*5. You should not be able to see concrete footings around any of the equipment. Deaths or permanent disabilities have occurred from children falling off equipment and striking their heads on exposed footings.
- 6. Glass, bottle caps, needles, trash, etc. can also cause injury if present on playground surfaces.

### EQUIPMENT MAINTENANCE

- \*1. Strangulation is the leading cause of playground fatalities. Some of these deaths occur when drawstrings on sweatshirts, coats, and other clothing get caught in gaps in the equipment. The area on top of slides is one potential trouble spot.
  - \*2. Entrapment places include between guardrails and underneath merry-go-rounds. Head entrapment occurs when the body fits through a space but the child's head cannot pass through the same space. This occurs because generally, young children's heads are larger than their bodies. If the space between two parts (usually guardrails) is more than three and a half inches then it must be greater than nine inches to avoid potential entrapment.
  - \*3. Broken equipment pieces are accidents waiting to happen. If a piece of equipment is broken, measures need to be taken to repair the piece. In the meantime, children should be kept off the equipment.
  - \*4. Missing parts also create a playground hazard. A rung missing from a ladder, which is the major access point onto a piece of equipment, poses an unnecessary injury hazard for the child.
  - 5. Protruding bolts or fixtures can cause problems with children running into equipment or catching clothing. Therefore, they pose a potential safety hazard.
  - 6. Exposed metal will rust. This weakens the equipment and will eventually create a serious playground hazard.
  - 7. Wood structures must be treated on a regular basis to avoid weather related problems such as splinters. Splintering can cause serious injuries to children.
  - 8. Plastic equipment may crack or develop holes due to temperature extremes and/or vandalism. This is a playground hazard.
- \*If these risk factors are missing, the potential for a life-threatening injury is significantly increased. 2006 National

# America's Playgrounds

## Safety Report Card

DOES Givens Community Center (Structure behind) MAKE THE GRADE?

Evaluate your playground using the following criteria.  A full explanation of the criteria is on the back of this sheet.

	Yes	No
<b>SUPERVISION</b>		
Adults present when children are on equipment	x	
Children can be easily viewed on equipment	x	
Children can be viewed in crawl spaces - none	x	
Rules posted regarding expected behavior		x
<b>AGE-APPROPRIATE DESIGN</b>		
Playgrounds have separate areas for ages 2-5 and 5-12	x	
Platforms have appropriate guardrails	x	
Platforms allow change of directions to get on/off structure		x
Signage indicating age group for equipment provided		x
Equipment design prevents climbing outside the structure		x
Supporting structure prevents climbing on it	x	
<b>FALL SURFACING</b>		
Suitable surfacing materials provided	x	
Height of all equipment is 8 feet or lower		x
Appropriate depth of loose fill provided - only one low spot	x	
Six foot use zone has appropriate surfacing	x	
Concrete footings are covered	x	
Surface free of foreign objects – broken beer bottles	x	
<b>EQUIPMENT MAINTENANCE</b>		
Equipment is free of noticeable gaps	x	
Equipment is free of head entrapments – slide looks unsafe	x	
Equipment is free of broken parts	x	
Equipment is free of missing parts	x	
Equipment is free of protruding bolts	x	
Equipment is free of rust – rust on swings	x	
Equipment is free of splinters	x	
Equipment is free of cracks/holes – swings have cracks	x	
<b>TOTAL POINTS</b>	<b>19</b>	<b>5</b>

- Under one climbing structure the fall surfacing needs to be replaced
- Older climbers boarder at 8ft, but easily climb to top and be over that.

Equipment overall in good condition. Small steps could be taken to to make this one of the few safe parks in our city.

# America's Playgrounds

## Safety Report Card

DOES CENTRAL PARK (915 Dwight St.) MAKE THE GRADE?

Evaluate your playground using the following criteria.  
A full explanation of the criteria is on the back of this sheet.

	Yes	No
<b>SUPERVISION</b>		
Adults present when children are on equipment	X	
Children can be easily viewed on equipment	X	
Children can be viewed in crawl spaces	X	
Rules posted regarding expected behavior		
<b>AGE-APPROPRIATE DESIGN</b>		
Playgrounds have separate areas for ages 2-5 and 5-12		
Platforms have appropriate guardrails		
Platforms allow change of directions to get on/off structure		
Signage indicating age group for equipment provided		
Equipment design prevents climbing outside the structure		
Supporting structure prevents climbing on it		
<b>FALL SURFACING</b>		
Suitable surfacing materials provided		
Height of all equipment is 8 feet or lower		
Appropriate depth of loose fill provided		
Six foot use zone has appropriate surfacing		
Concrete footings are covered	X	
Surface free of foreign objects	X	
<b>EQUIPMENT MAINTENANCE</b>		
Equipment is free of noticeable gaps		
Equipment is free of head entrapments		
Equipment is free of broken parts	X	
Equipment is free of missing parts	X	
Equipment is free of protruding bolts	X	
Equipment is free of rust		
Equipment is free of splinters		
Equipment is free of cracks/holes	X	
<b>TOTAL POINTS</b>	<b>9</b>	<b>15</b>

### SCORING SYSTEM

Total the number of "Yes" answers in the "Total Points" box in the table.

24 – 20 = A Congratulations on having a SAFE playground. Please continue to maintain this excellence.  
19 – 17 = B Your playground is on its way to providing a safe environment for children. Work on the areas checked 'No'.  
16 – 13 = C Your playground is potentially hazardous for children. Take corrective measures.  
12 – 8 = D Children are at risk on this playground. Start to make improvements.  
7 & = F Do not allow children on this playground. Make changes immediately.

**\*\*If any of the gray boxes are marked 'NO', the potential of a life threatening injury is significantly increased. Contact the owner of the playground.**

#### General Comments:

- Muddy area by play area needs grass planted but they just planted trees there.
- People need to pick up after there pets
- Bathroom should be cleaned better
- Short wood fence around one of the swing sets serves no purpose and should be removed kids can climb over it and get splinters
- Need picnic tables or more benches near play area
- There is a semi-new retaining wall but there is big spaces at either end of it that could trap a Child.

## Explanation of Risk Factor Criteria

### SUPERVISION

- \*1. Since equipment can't supervise children, it is important that adult supervision is present when children are playing on the playground.
- 2. In order to properly supervise, children need to be seen. This question is asking if there are any blind spots where children can hide out of the sight of the supervisor.
- 3. Many crawl spaces, tunnels, and boxed areas have plexiglas or some type of transparent material present to allow the supervisor to see that a child is inside the space. When blind tunnels are present, children cannot be properly supervised.
- 4. Rules help reinforce expected behavior. Therefore, the posting of playground rules is recommended. For children, ages 2-5, no more than three rules should be posted. Children over the age of five will remember five rules. These rules should be general in nature, such as "respect each other and take turns."

### AGE APPROPRIATE DESIGN

- \*1. It is recommended that playgrounds have separate areas with appropriately sized equipment and materials to serve ages 2-5 and ages 5-12. Further, the intended user group should be obvious from the design and scale of equipment. In playgrounds designed to serve children of all ages, the layout of pathways and the landscaping of the playground should show the distinct areas for the different age groups. The areas should be separated at least by a buffer zone, which could be an area with shrubs or benches.
- \*2. Either guardrails or protective barriers may be used to prevent inadvertent or unintentional falls off elevated platforms. However, to provide greater protection, protective barriers should be designed to prevent intentional attempts by children.
- 3. Platforms over six feet in height should provide an intermediate standing surface where a decision can be made to halt the ascent or to pursue an alternative means of descent.
- 4. Signs posted in the playground area can be used to give some guidance to adults as to the age appropriateness of equipment.
- 5. Children use equipment in creative ways which are not necessarily what the manufacturer intended when designing the piece. Certain equipment pieces, like high tube slides, can put the child at risk if they can easily climb on the outside of the piece. The answer to this question is a judgment on your part as to whether the piece was designed to minimize risk to the child for injury from a fall.
- 6. Support structures such as long poles, bars, swing frames, etc. become the play activity. The problem is that many times these structures have no safe surfacing underneath and children fall from dangerous heights to hard surfaces.

### FALL SURFACING

- \*1. Appropriate surfaces are either loose fill (engineered wood fiber, sand, pea gravel, or shredded tires) or unitary surfaces (rubber tiles, rubber mats, and poured in place rubber). Inappropriate surface materials are asphalt, concrete, dirt, and grass. It should be noted that falls from 1 ft. onto concrete could cause a concussion. Falls from a height of eight feet onto dirt is the same as a child hitting a brick wall traveling 30 mph.
- \*2. Research has shown that equipment heights can double the probability of a child getting injured. We recommend that the height of equipment for pre-school age children be no higher than 6 feet and the height of equipment for school age children be limited to 8 feet. \*3. Proper loose fill surfacing must be at the appropriate depth to cushion falls. An inch of sand upon hard packed dirt will not provide any protection. We recommend 12 inches of loose fill material under and around playground equipment.
- \*4. Appropriate surfacing should be located directly underneath equipment and extend six feet in all directions with the exception of slides and swings, which have a longer use zone.
- \*5. You should not be able to see concrete footings around any of the equipment. Deaths or permanent disabilities have occurred from children falling off equipment and striking their heads on exposed footings.
- 6. Glass, bottle caps, needles, trash, etc. can also cause injury if present on playground surfaces.

### EQUIPMENT MAINTENANCE

- \*1. Strangulation is the leading cause of playground fatalities. Some of these deaths occur when drawstrings on sweatshirts, coats, and other clothing get caught in gaps in the equipment. The area on top of slides is one potential trouble spot.
  - \*2. Entrapment places include between guardrails and underneath merry-go-rounds. Head entrapment occurs when the body fits through a space but the child's head cannot pass through the same space. This occurs because generally, young children's heads are larger than their bodies. If the space between two parts (usually guardrails) is more than three and a half inches then it must be greater than nine inches to avoid potential entrapment.
  - \*3. Broken equipment pieces are accidents waiting to happen. If a piece of equipment is broken, measures need to be taken to repair the piece. In the meantime, children should be kept off the equipment.
  - \*4. Missing parts also create a playground hazard. A rung missing from a ladder, which is the major access point onto a piece of equipment, poses an unnecessary injury hazard for the child.
  - 5. Protruding bolts or fixtures can cause problems with children running into equipment or catching clothing. Therefore, they pose a potential safety hazard.
  - 6. Exposed metal will rust. This weakens the equipment and will eventually create a serious playground hazard.
  - 7. Wood structures must be treated on a regular basis to avoid weather related problems such as splinters. Splintering can cause serious injuries to children.
  - 8. Plastic equipment may crack or develop holes due to temperature extremes and/or vandalism. This is a playground hazard.
- \*If these risk factors are missing, the potential for a life-threatening injury is significantly increased. 2006 National

# America's Playgrounds

## Safety Report Card

DOES South Kitsap (Jackson and Lund) MAKE THE GRADE?

Evaluate your playground using the following criteria.  
A full explanation of the criteria is on the back of this sheet.

	Yes	No
<b>SUPERVISION</b>		
Adults present when children are on equipment	X	
Children can be easily viewed on equipment	X	
Children can be viewed in crawl spaces	X	
Rules posted regarding expected behavior	X	
<b>AGE-APPROPRIATE DESIGN</b>		
Playgrounds have separate areas for ages 2-5 and 5-12		X
Platforms have appropriate guardrails	X	
Platforms allow change of directions to get on/off structure	X	
Signage indicating age group for equipment provided		X
Equipment design prevents climbing outside the structure	X	
Supporting structure prevents climbing on it	X	
<b>FALL SURFACING</b>		
Suitable surfacing materials provided		X
Height of all equipment is 8 feet or lower	X	
Appropriate depth of loose fill provided		X
Six foot use zone has appropriate surfacing	X	
Concrete footings are covered	X	
Surface free of foreign objects	X	
<b>EQUIPMENT MAINTENANCE</b>		
Equipment is free of noticeable gaps		X
Equipment is free of head entrapments	X	
Equipment is free of broken parts	X	
Equipment is free of missing parts	X	
Equipment is free of protruding bolts	X	
Equipment is free of rust		X
Equipment is free of splinters	X	
Equipment is free of cracks/holes	X	
<b>TOTAL POINTS</b>	<b>19</b>	<b>6</b>

### SCORING SYSTEM

Total the number of "Yes" answers in the "Total Points" box in the table.

24 – 20 = A Congratulations on having a SAFE playground. Please continue to maintain this excellence.  
19 – 17 = B Your playground is on its way to providing a safe environment for children. Work on the areas checked 'No'.  
16 – 13 = C Your playground is potentially hazardous for children. Take corrective measures.  
12 – 8 = D Children are at risk on this playground. Start to make improvements.  
7 & = F Do not allow children on this playground. Make changes immediately.

**\*\*If any of the gray boxes are marked 'NO', the potential of a life threatening injury is significantly increased. Contact the owner of the playground.**

#### General Comments:

- Not enough pea gravel underneath tires swing, when it rains it is when beneath
- Metal bars are slippery when wet
- The public water tap near the restrooms does not completely close and gallons of water is being wasted.

For Additional Resources and Information Contact:

National Program for Playground Safety: 1-800-554-PLAY (7529) ~ [www.playgroundsafety.org](http://www.playgroundsafety.org)

## Explanation of Risk Factor Criteria

### SUPERVISION

- \*1. Since equipment can't supervise children, it is important that adult supervision is present when children are playing on the playground.
- 2. In order to properly supervise, children need to be seen. This question is asking if there are any blind spots where children can hide out of the sight of the supervisor.
- 3. Many crawl spaces, tunnels, and boxed areas have plexiglas or some type of transparent material present to allow the supervisor to see that a child is inside the space. When blind tunnels are present, children cannot be properly supervised.
- 4. Rules help reinforce expected behavior. Therefore, the posting of playground rules is recommended. For children, ages 2-5, no more than three rules should be posted. Children over the age of five will remember five rules. These rules should be general in nature, such as "respect each other and take turns."

### AGE APPROPRIATE DESIGN

- \*1. It is recommended that playgrounds have separate areas with appropriately sized equipment and materials to serve ages 2-5 and ages 5-12. Further, the intended user group should be obvious from the design and scale of equipment. In playgrounds designed to serve children of all ages, the layout of pathways and the landscaping of the playground should show the distinct areas for the different age groups. The areas should be separated at least by a buffer zone, which could be an area with shrubs or benches.
- \*2. Either guardrails or protective barriers may be used to prevent inadvertent or unintentional falls off elevated platforms. However, to provide greater protection, protective barriers should be designed to prevent intentional attempts by children.
- 3. Platforms over six feet in height should provide an intermediate standing surface where a decision can be made to halt the ascent or to pursue an alternative means of descent.
- 4. Signs posted in the playground area can be used to give some guidance to adults as to the age appropriateness of equipment.
- 5. Children use equipment in creative ways which are not necessarily what the manufacturer intended when designing the piece. Certain equipment pieces, like high tube slides, can put the child at risk if they can easily climb on the outside of the piece. The answer to this question is a judgment on your part as to whether the piece was designed to minimize risk to the child for injury from a fall.
- 6. Support structures such as long poles, bars, swing frames, etc. become the play activity. The problem is that many times these structures have no safe surfacing underneath and children fall from dangerous heights to hard surfaces.

### FALL SURFACING

- \*1. Appropriate surfaces are either loose fill (engineered wood fiber, sand, pea gravel, or shredded tires) or unitary surfaces (rubber tiles, rubber mats, and poured in place rubber). Inappropriate surface materials are asphalt, concrete, dirt, and grass. It should be noted that falls from 1 ft. onto concrete could cause a concussion. Falls from a height of eight feet onto dirt is the same as a child hitting a brick wall traveling 30 mph.
- \*2. Research has shown that equipment heights can double the probability of a child getting injured. We recommend that the height of equipment for pre-school age children be no higher than 6 feet and the height of equipment for school age children be limited to 8 feet. \*3. Proper loose fill surfacing must be at the appropriate depth to cushion falls. An inch of sand upon hard packed dirt will not provide any protection. We recommend 12 inches of loose fill material under and around playground equipment.
- \*4. Appropriate surfacing should be located directly underneath equipment and extend six feet in all directions with the exception of slides and swings, which have a longer use zone.
- \*5. You should not be able to see concrete footings around any of the equipment. Deaths or permanent disabilities have occurred from children falling off equipment and striking their heads on exposed footings.
- 6. Glass, bottle caps, needles, trash, etc. can also cause injury if present on playground surfaces.

### EQUIPMENT MAINTENANCE

- \*1. Strangulation is the leading cause of playground fatalities. Some of these deaths occur when drawstrings on sweatshirts, coats, and other clothing get caught in gaps in the equipment. The area on top of slides is one potential trouble spot.
  - \*2. Entrapment places include between guardrails and underneath merry-go-rounds. Head entrapment occurs when the body fits through a space but the child's head cannot pass through the same space. This occurs because generally, young children's heads are larger than their bodies. If the space between two parts (usually guardrails) is more than three and a half inches then it must be greater than nine inches to avoid potential entrapment.
  - \*3. Broken equipment pieces are accidents waiting to happen. If a piece of equipment is broken, measures need to be taken to repair the piece. In the meantime, children should be kept off the equipment.
  - \*4. Missing parts also create a playground hazard. A rung missing from a ladder, which is the major access point onto a piece of equipment, poses an unnecessary injury hazard for the child.
  - 5. Protruding bolts or fixtures can cause problems with children running into equipment or catching clothing. Therefore, they pose a potential safety hazard.
  - 6. Exposed metal will rust. This weakens the equipment and will eventually create a serious playground hazard.
  - 7. Wood structures must be treated on a regular basis to avoid weather related problems such as splinters. Splintering can cause serious injuries to children.
  - 8. Plastic equipment may crack or develop holes due to temperature extremes and/or vandalism. This is a playground hazard.
- \*If these risk factors are missing, the potential for a life-threatening injury is significantly increased. 2006 National

# America's Playgrounds

## Safety Report Card

DOES VAN ZEE PARK (300 Tremont) MAKE THE GRADE?

Evaluate your playground using the following criteria.  
A full explanation of the criteria is on the back of this sheet.

	Yes	No
<b>SUPERVISION</b>		
Adults present when children are on equipment	X	
Children can be easily viewed on equipment	X	
Children can be viewed in crawl spaces	X	
Rules posted regarding expected behavior		X
<b>AGE-APPROPRIATE DESIGN</b>		
Playgrounds have separate areas for ages 2-5 and 5-12	X	
Platforms have appropriate guardrails	X	
Platforms allow change of directions to get on/off structure		X
Signage indicating age group for equipment provided		X
Equipment design prevents climbing outside the structure	X	
Supporting structure prevents climbing on it	X	
<b>FALL SURFACING</b>		
Suitable surfacing materials provided		X
Height of all equipment is 8 feet or lower	X	
Appropriate depth of loose fill provided		X
Six foot use zone has appropriate surfacing	X	
Concrete footings are covered – see note below		X
Surface free of foreign objects	X	
<b>EQUIPMENT MAINTENANCE</b>		
Equipment is free of noticeable gaps	X	
Equipment is free of head entrapments	X	
Equipment is free of broken parts		X
Equipment is free of missing parts	X	
Equipment is free of protruding bolts	X	
Equipment is free of rust		X
Equipment is free of splinters	X	
Equipment is free of cracks/holes	X	
<b>TOTAL POINTS</b>	<b>16</b>	<b>8</b>

### SCORING SYSTEM

Total the number of "Yes" answers in the "Total Points" box in the table.

24 – 20 = A Congratulations on having a SAFE playground. Please continue to maintain this excellence.  
19 – 17 = B Your playground is on its way to providing a safe environment for children. Work on the areas checked 'No'.  
16 – 13 = C Your playground is potentially hazardous for children. Take corrective measures.  
12 – 8 = D Children are at risk on this playground. Start to make improvements.  
7 & = F Do not allow children on this playground. Make changes immediately.

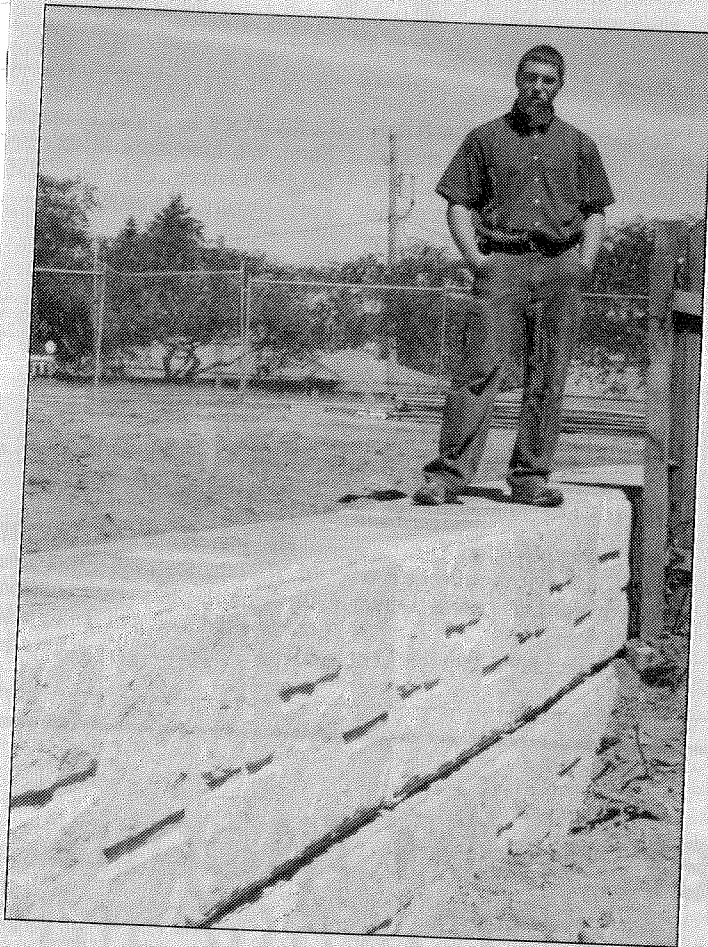
**\*\*If any of the gray boxes are marked 'NO', the potential of a life threatening injury is significantly increased. Contact the owner of the playground.**

#### General Comments:

- Not enough pea gravel underneath tires swing, when it rains it is when beneath
- Metal bars are slippery when wet
- **There appears to be something that looks like fire pit inside the play area (within the pea gravel). It might have once contained a piece of equipment but now is just a hollow CONCRETE Base.**

For Additional Resources and Information Contact:

National Program for Playground Safety: 1-800-554-PLAY (7529) [www.playgroundsafety.org](http://www.playgroundsafety.org)



Aaron Burkhalter/Staff Photo

*WSU intern Matthew Macaras inspects the wall he helped build at Central Park on Dekalb.*

## Central Park gets new wall

*Independent News Sources*

Port Orchard's Central Park, a playfield located on Dwight Street between Seattle and Harrison, is receiving a much-needed wall along its east side.

A wall that lines the park holds the land elevated above the houses to its east. Over the years, the old wall began to warp, dumping soil onto the adjacent properties.

The park has been closed this week, as an intern from Public Works oversees the wall replacement. Matthew Macaras, an engineering student from Western Washington University, directed the \$20,000 project, which installed segments of wall in large concrete blocks.

Macaras, 22, said the project has so far come under budget, around \$17,000.

533.10.04

## James Weaver

---

**From:** Kissy Strombeck [kmstrombeck@msn.com]  
**Sent:** Wednesday, April 16, 2008 1:16 PM  
**To:** James Weaver  
**Cc:** Becci Vanni; billandjulia@msn.com; Carol Riehl; Daba Pagel; Janet McDermott; jeannine mccurrie; Jennifer Newcomer; Kelsay Irby  
**Subject:** Port Orchard Comprehensive Plan 2008  
**Categories:** Comprehensive Plan

Kissy Strombeck  
[kmstrombeck@msn.com](mailto:kmstrombeck@msn.com)  
Port Orchard, WA, 98366

April 16, 2008

James Weaver  
[jweaver@cityofportorchard.us](mailto:jweaver@cityofportorchard.us)  
Port Orchard Planning Department  
216 Division Street  
Port Orchard, WA, 98366

Dear Mr. Weaver,,

On Monday, April 21, 2008 there will be a Port Orchard Comprehensive Plan General Meeting for 2008.

As a member of a group of concerned citizens regarding the future of Port Orchard Parks and Recreation, would it be imperative that we show up at this first meeting? Do we need to bring a list of goals and objectives? Is it important to come to this meeting with many interested parties or would a few suffice? Will the future agenda be based on your findings from the April 21, 2008 first general meeting of Open Space & Parks: Public Parks, community centers, & recreation. Or will you still be taking community goals and objectives after this first general meeting?

I understand that it might be cumbersome to serve the public interest regarding the Open Space & Parks Comprehensive Plan but we are very interested in this area of planning for our community. As concerned citizens and as concerned parents we would like to be involved in this planning process and have a meaningful role in the development of plans and programs for the City of Port Orchard Parks and Recreation.

In addition, a few of us tried to fill out the online survey and unfortunately, it is still under construction. We are hoping that it will be up and running soon to post our comments and opinions on the survey.

Sincerely,

Kissy Strombeck

.

---

Pack up or back up-use SkyDrive to transfer files or keep extra copies. Learn how.  
[http://www.windowslive.com/skydrive/overview.html?ocid=TXT\\_TAGLM\\_WL\\_Refresh\\_skydrive\\_packup\\_042008](http://www.windowslive.com/skydrive/overview.html?ocid=TXT_TAGLM_WL_Refresh_skydrive_packup_042008)